

Mill Levy Override Proposal

Weld RE-5J seeks the community's input on a \$4 million mill levy override (MLO) proposal that would sunset after 10 years.

The estimated tax impact of a \$4 million mill levy override is \$3.73 per month per \$100,000 of a home's actual value based on the District's current assessed valuation.*

Expand Career & Technical Education Programming



Expand CTE programming as well as work-based learning, internships and other career pathway opportunities.



Hire School-Based Mental Health Professionals & School Resource Officers



Ensure each Weld RE-5J school has one mental health professional and one SRO (police officer).



Attract & Retain Quality Teachers, Staff & Teacher's Aides



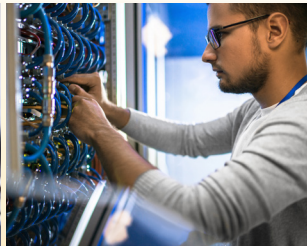
Focus on preventing neighboring districts from recruiting our best teachers, staff and teachers' aides.



Add Instructional Coaches & Technical, Assessment & Curriculum Support



Address a variety of critical support needs. Currently, there is only one instructional coach for 220+ teachers.



Implement Block Scheduling for Middle & High School Students



Reinstitute block scheduling at both the middle and high school to enhance instruction and improve outcomes.



Replace Outdated Buses



Improve transportation safety by replacing buses that have reached the end of their useful life.



*If oil and gas valuation is reduced, the estimated tax impact would increase.